

Quick Installation Guide

DAG1000-1S

DAG1000-2S

DAG1000-4S

Thanks for Choosing Dinstar's Product!

Please read this guide carefully before installing the gateway. If you need any technical support, please contact us.

Tel: +86 75561919966

Email: support@dinstar.com

Website: www.dinstar.com

1. Models and Ports

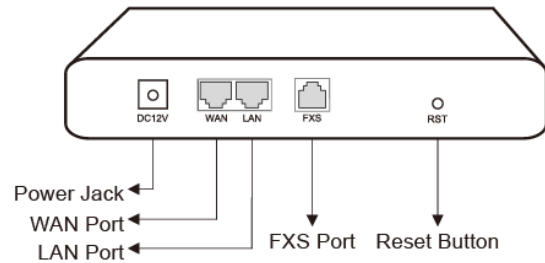
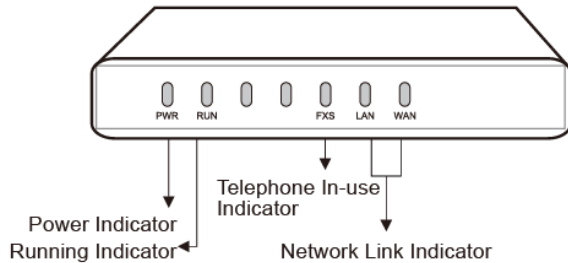
Gateway \ Port Type	WAN	LAN	FXS
DAG1000-1S	1	1	1
DAG1000-2S	1	1	2
DAG1000-4S	1	1	4

2. Description of Indicators

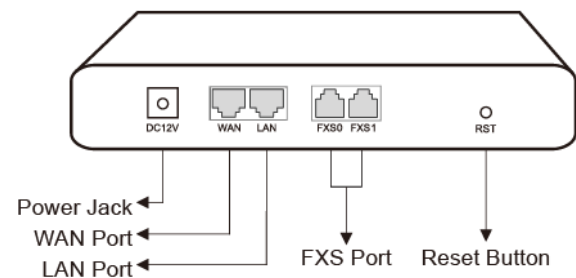
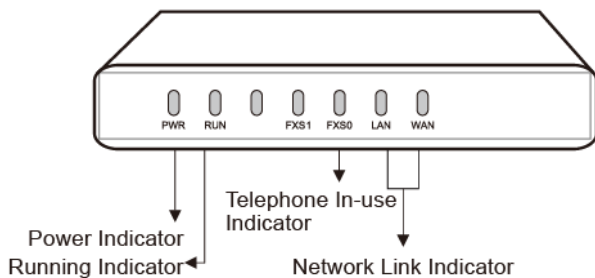
Indicator	Definition	Status	Description
PWR	Power Indicator	On	The gateway is powered on
		Off	The gateway is powered off or there is no power supply
RUN	Running Indicator	Slow Flashing	The gateway is running properly
		Fast Flashing	If there is a SIP account registered successfully, the indicator is fast flashing.
		Off	The gateway is running improperly
FXS	Telephone In-use Indicator	On	FXS port is currently occupied by a call
		Off	FXS port is idle or faulty.
WAN/LAN	Network Link Indicator	Green Flashing	The gateway is properly connected to network
		Off	The gateway is not connected to network or network connection is improper way.
	Network Speed Indicator	On	Work at 100Mbps
		Off	Work at 10Mbps

3. Indicators and Ports

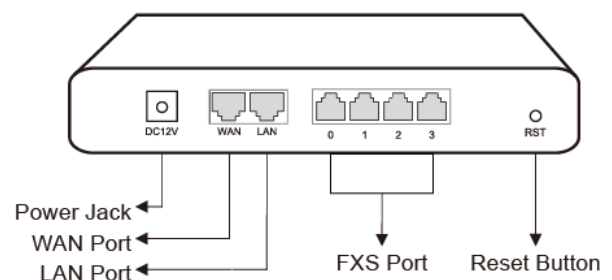
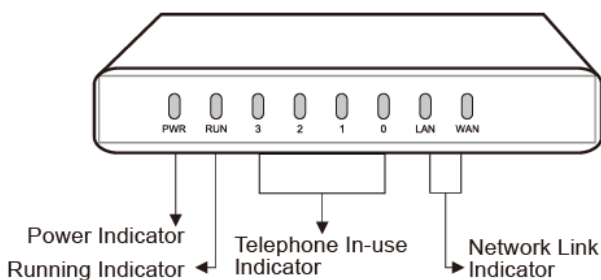
▶ DAG1000-1S



▶ DAG1000-2S



▶ DAG1000-4S



4. Installation Attentions

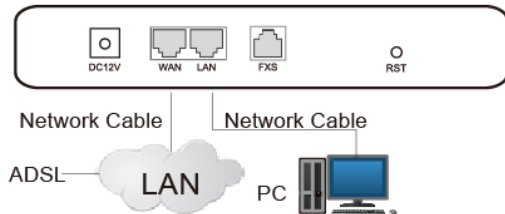
- Anti-jamming: to reduce the interference with telephone calls, it's highly recommended that telephone lines connected to the gateway should be placed away from power cables.
- Power supply: the power adapter of the gateway accepts DC input voltage of 12v. Please ensure safe and stable power supply.
- Network bandwidth: please ensure there is enough network bandwidth so as to guarantee stabilized running of the gateway.

- Temperature and humidity: to avoid any accident that might cause malfunction, it's advised to install the gateway in an equipment room where temperature and humidity are appropriate.
- Ventilation: to avoid overheating, please do not pile up the gateway with other devices and make sure the gateway has good ventilation around.
- Mechanical load: please make sure the gateway is placed steadily to avoid damage. It's highly advised to horizontally place the gateway on a flat surface or a cabinet.

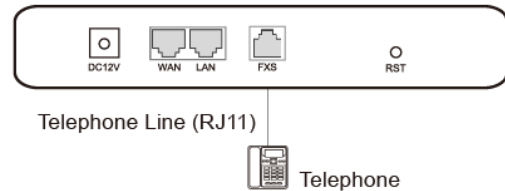
5. Installation Instructions

► Connection Diagram for DAG1000-1S

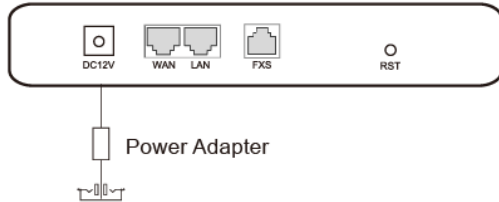
● Network Connection



● Telephone Connection

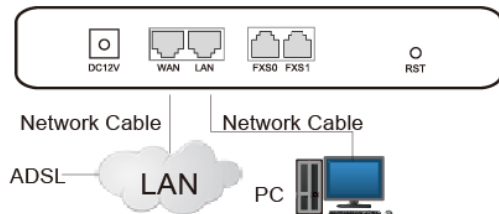


● Power Connection

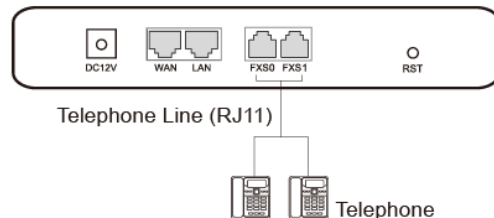


► Connection Diagram for DAG1000-2S

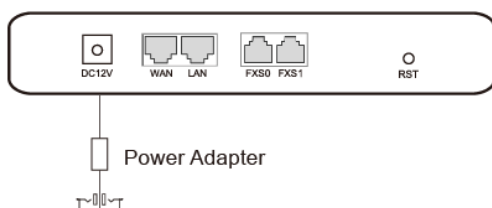
● Network Connection



● Telephone Connection

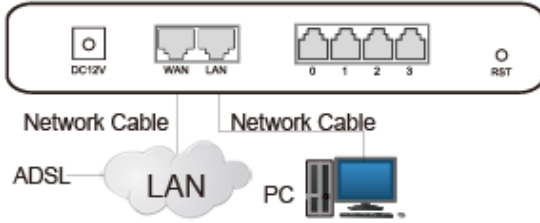


● Power Connection

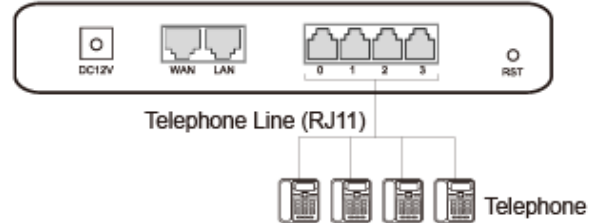


► Connection Diagram for DAG1000-4S

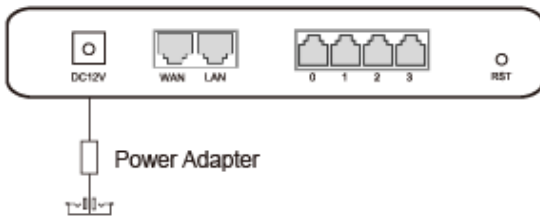
• Network Connection



• Telephone Connection



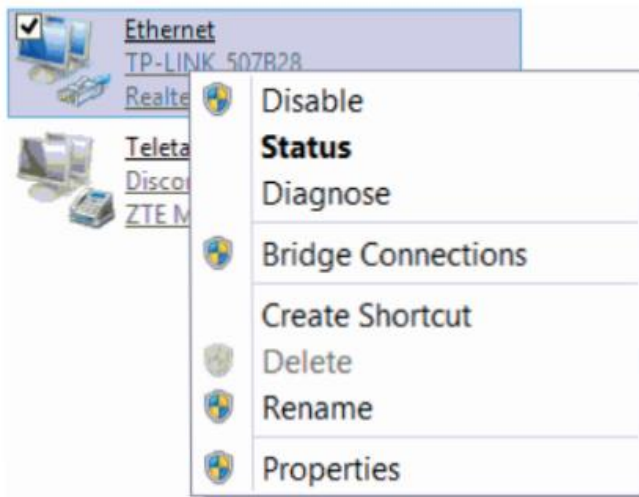
• Power Connection



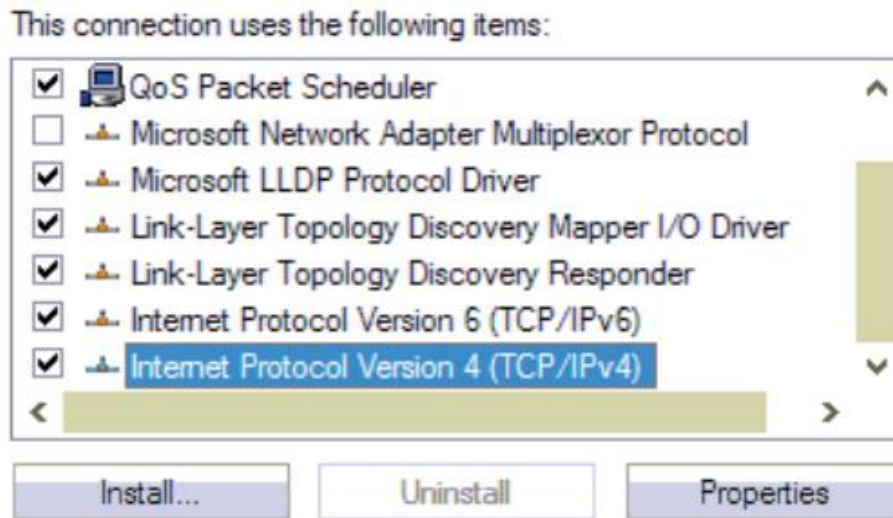
6 Modify PC's IP Address

To log in the Web Management System of the gateway, firstly, you need to modify the IP address of PC which is used to access the gateway and to make it at the same network segment with the gateway.

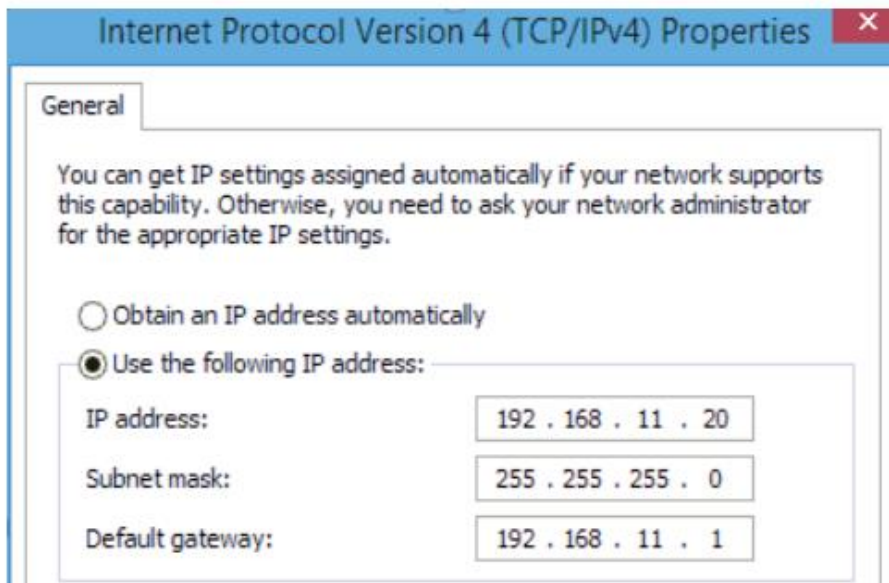
- ① On the PC, click '**Network (or Ethernet) → Properties**'.



② Double-click '**Internet Protocol Version 4 (TCP/IPv4)**'.



③ Select '**Use the following IP address**', and then enter an available IP address '192.168.11.XXX' which is at the same network segment with '192.168.11.1'.



7 Log in Web Management System

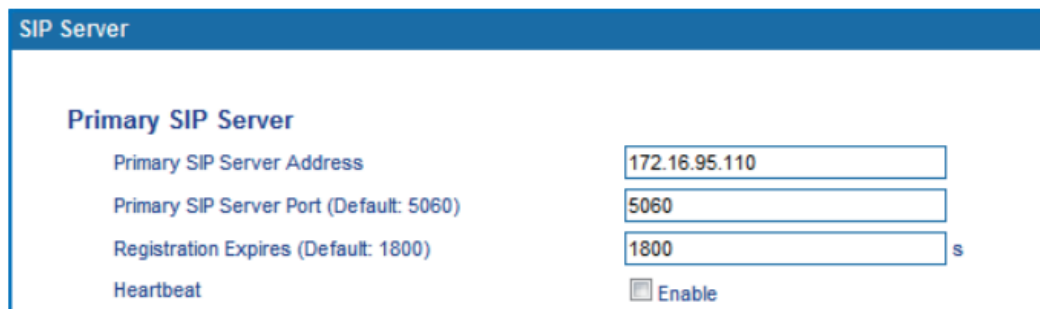
Open a web browser and enter the gateway's IP address (default IP is 192.168.11.1). Then, input username and password in the displayed login GUI. Both the default username and password are admin.

8 Modify Gateway's IP Address

If you want to modify the IP address of DAG1000-1S/2S/4S, please click '**Network** → **Local Network**' in the navigation tree on the left of the Web Management System, and then input new IP address and DNS server address on the displayed interface.

9 Configure SIP Server

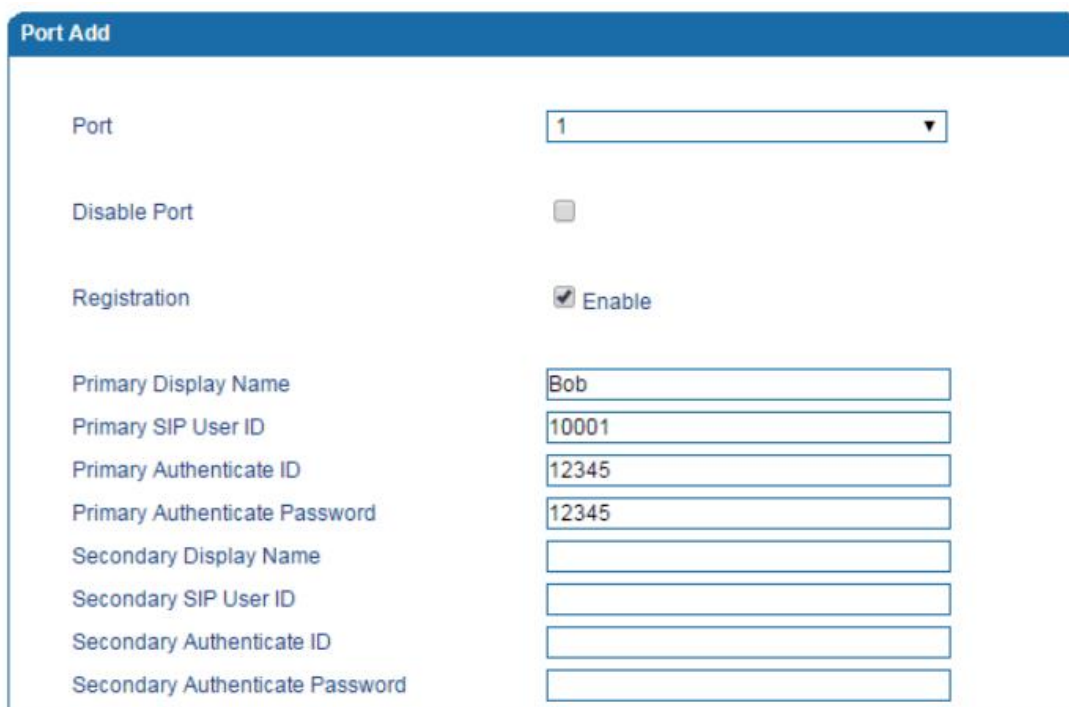
Log in the Web Management System of the gateway, and then click **SIP Server** in the navigation tree and then enter the address of the SIP server which is to be registered. Click **Save** in the last.



The screenshot shows the 'SIP Server' configuration page. It has a blue header with the text 'SIP Server'. Below the header, there is a section titled 'Primary SIP Server'. This section contains four rows of configuration options:

Primary SIP Server Address	172.16.95.110
Primary SIP Server Port (Default: 5060)	5060
Registration Expires (Default: 1800)	1800 s
Heartbeat	<input type="checkbox"/> Enable

Click **Port** in the navigation tree on the left, and then click **Add**. Input the SIP account and authentication password assigned by the SIP server.



The screenshot shows the 'Port Add' configuration page. It has a blue header with the text 'Port Add'. Below the header, there are several configuration options:

Port	1
Disable Port	<input type="checkbox"/>
Registration	<input checked="" type="checkbox"/> Enable
Primary Display Name	Bob
Primary SIP User ID	10001
Primary Authenticate ID	12345
Primary Authenticate Password	12345
Secondary Display Name	
Secondary SIP User ID	
Secondary Authenticate ID	
Secondary Authenticate Password	

Click **Save** and then restart the gateway for the new configurations to take effect.

10 Basic Operations

- ◆ Dial *158# to query the IP address of LAN port of the gateway;
- ◆ Dial *159# to query the IP address of WAN port of the gateway;
- ◆ Dial *114# to query the telephone number of a FXS port;
- ◆ Dial *165*000000# to restore default IP address, user name and password;
- ◆ Restore factory default settings:
 - (1) dial *166*000000#;
 - (2) press the **RST** button for 7 seconds;
 - (3) Log in the gateway and then click '**Tools** →**Factory Reset**', then click Apply and restart the gateway.
- ◆ Dial *111# to restart the gateway.

11 More Details

This document only provides instructions for quick installation and basic configuration, for detailed configuration and parameter explanation, please make reference to user manual or ask for online technical support.

IP Communication Solutions

Shenzhen Dinstar Co.,Ltd.

Website: <https://www.dinstar.com>

